

Fraternities & Sororities: What Do You Need to Know?

NOVEMBER 15, 2023





Instructions for Today's Webinar

PLEASE USE THE Q & A FEATURE TO SUBMIT QUESTIONS.

THE LINK TO THE VIDEO RECORDING OF THE WEBINAR WILL
BE POSTED IN A FEW DAYS AT
[HTTPS://FAMILIES.TULANE.EDU/WEBINARS-TUTORIALS](https://families.tulane.edu/webinars-tutorials) AND
[HTTPS://GREEK.TULANE.EDU/FAMILIES](https://greek.tulane.edu/families)

Meet the Staff



Nelda B. Bailey
DIRECTOR

- Strategic Oversight of OFSP
- Community-Wide Initiatives
- Multicultural Greek Council (MGC)
- National Pan-Hellenic Council (NPHC)
- Equity, Diversity & Inclusion Initiatives
- Neighborhood Relations
- Crisis Management
- Office Marketing & Communication



Neil Bourgeois
ASSISTANT DIRECTOR

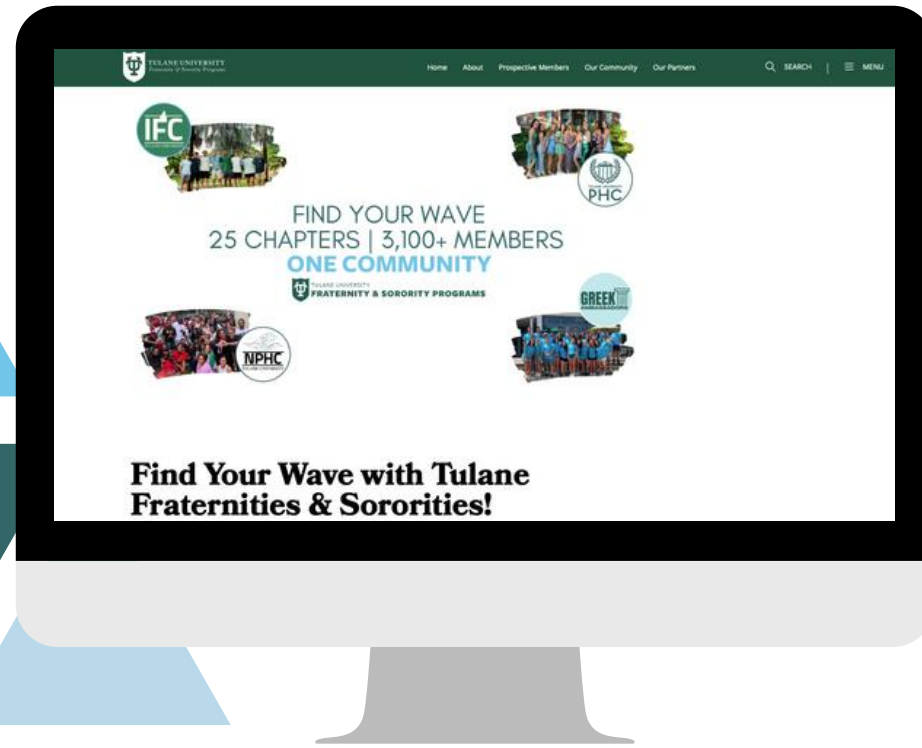
- Interfraternity Council (IFC)
- Health & Wellness Initiatives
- Social Event Registration
- Sexual Violence Prevention Efforts
- Greek Ambassadors



Rebecca Reed
ASSISTANT DIRECTOR

- Panhellenic Council
- Leadership Development Initiatives
- Officer Training
- New Member Education Programs
- Undergraduate Student Workers
- Family Engagement

Stay Connected



GREEK.TULANE.EDU



@GREEK.TULANE



GREEK@TULANE.EDU



504-247-1542

Mission & Values

THE MISSION OF THE OFFICE OF FRATERNITY AND SORORITY PROGRAMS IS TO **ENRICH THE CAPACITIES OF MEMBERS OF THE FRATERNITY AND SORORITY COMMUNITY THROUGH OPPORTUNITIES AND EXPERIENCES** THAT DEVELOP AND MAINTAIN THE VALUES OF **LEADERSHIP, SCHOLARSHIP, SERVICE, AND FRIENDSHIP.**



Friendship

Most students seek Greek affiliation as a way to meet people and develop lifelong friendships. Through brotherhood and sisterhood retreats, social events, and a variety of other chapter activities, students are able to build a close network of brothers and sisters to share in their collegiate experience.





Leadership

JOINING A FRATERNITY OR SORORITY IS ABOUT MORE THAN JUST SOCIAL OPPORTUNITIES AND RELATIONSHIPS. THE OFFICE OF FRATERNITY AND SORORITY PROGRAM ALSO HOSTS DIFFERENT EVENTS THROUGHOUT THE YEAR **TO ENCOURAGE MEMBERS TO FOCUS ON THEIR OWN PERSONAL, PROFESSIONAL, AND LEADERSHIP DEVELOPMENT.**





Scholarship

INDIVIDUAL CHAPTERS AND THE COUNCILS HAVE SCHOLARSHIP CHAIRS AND ACADEMIC PROGRAMMING TO HELP MEMBERS SUCCEED IN THE CLASSROOM.

FRATERNITIES PROMOTE SCHOLASTIC ACHIEVEMENT THROUGH PROGRAMS LIKE:

- STUDY GROUPS
- MENTORS
- STUDY HOURS
- RECOGNIZING ACADEMIC ACHIEVEMENT



Academics

Spring 2023

OFSP Average: 3.471

All-Campus Average: 3.368



Congratulations

ON A GREAT SEMESTER!

15.1%	45.5%	61.9%	84.6%	36.8%
4.00	3.70+	3.50+	3.00+	3,143
	DEAN'S LIST			MEMBERS



Service & Philanthropy

MEMBERS ARE **ENCOURAGED TO GIVE BACK TO THE TULANE AND GREATER NEW ORLEANS COMMUNITIES THROUGH SERVICE INITIATIVES**, WHICH MAY BE ORGANIZED BY THE OFFICE, THE GOVERNING COUNCIL, AND INDIVIDUAL CHAPTERS. **OUR CHAPTERS SUPPORT A VARIETY OF CAUSES** INCLUDING BREAST CANCER AWARENESS AND RESEARCH, SEXUAL ASSAULT PREVENTION AND AWARENESS, LOCAL FOOD BANKS, WOMEN'S EMPOWERMENT ISSUES, ACCESS TO EDUCATION, JUVENILE DIABETES RESEARCH, SAFE AND AFFORDABLE HOUSING, THE LOCAL CHILDREN'S HOSPITAL, AND SO MUCH MORE.



Social Responsibility

JOINING A FRATERNITY OR SORORITY IS ABOUT MORE THAN JUST THE SOCIAL OPPORTUNITIES AND RELATIONSHIPS. CHAPTERS ARE REMINDED OF THE IMPORTANCE OF SOCIAL RESPONSIBILITY AND **HOW AN ORGANIZATION IS RESPONSIBLE FOR THE IMPACTS OF ITS DECISIONS AND ACTIVITIES ON SOCIETY AND THE GREATER COMMUNITY.**





Interfraternity Council

- The Interfraternity Council (IFC) is the governing body for 12 social fraternities at Tulane University
- IFC promotes interfraternalism, through programs such as community-wide philanthropy events, facilitates educational and public relations workshops, and coordinates recruitment efforts.
- 12 Member Organizations:
 - Alpha Epsilon Pi, Beta Theta Pi (coming Fall 2023) Delta Tau Delta, Kappa Alpha, Kappa Sigma, Phi Delta Theta, Phi Gamma Delta, Phi Kappa Sigma, Sigma Alpha Epsilon, Sigma Chi, Zeta Beta Tau, and Zeta Psi





Interfraternity Council Recruitment

Fall 2023

- Quad Days:
 - October 25th
 - November 15th
- Open Houses:
 - September 13th
 - October 11th
 - November 1st

• Spring 2024

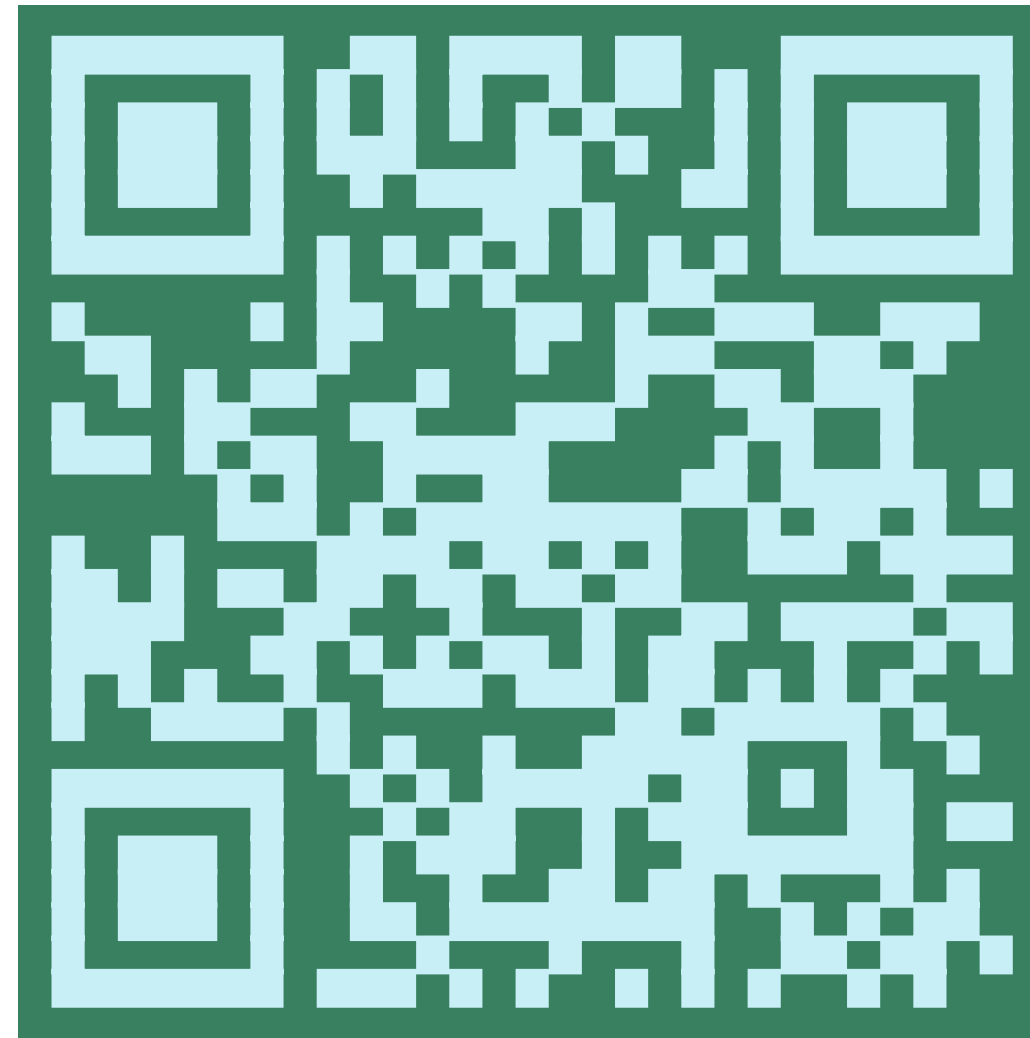
- January 21st: Convocation
- January 22nd: IFC Field Day
- January 23rd-25th: Chapter Open Houses
- January 26th: Preference
- January 27th: Bid Day





Interfraternity Council Recruitment

YOUR STUDENT WILL NEED TO
REGISTER USING THIS LINK.

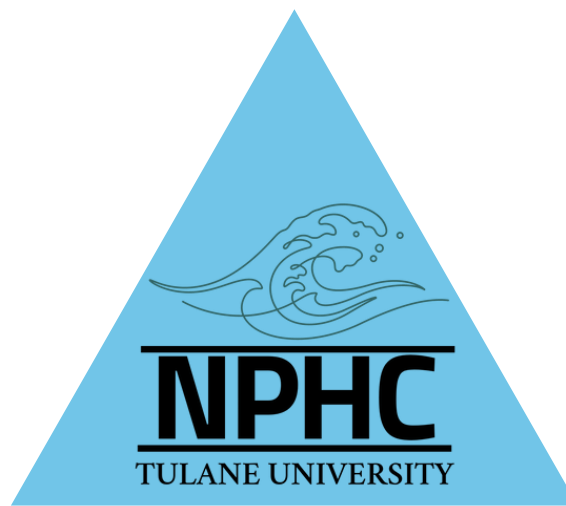




National Pan-Hellenic Council

- The Tulane National Pan-Hellenic Council (NPHC) serves as the coordinating body of all affiliate organizations that are members of the "Divine Nine" historically Black Greek Letter Organizations.
- The role of the NPHC is to promote higher standards of scholarship, a greater degree of culture, closer social fellowship, and a stronger interpreter spirit among the affiliate members
- 4 Member Organizations:
 - Alpha Phi Alpha Fraternity, Inc.; Alpha Kappa Alpha Sorority, Inc.; Delta Sigma Theta Sorority, Inc.; and Zeta Phi Beta Sorority, Inc.

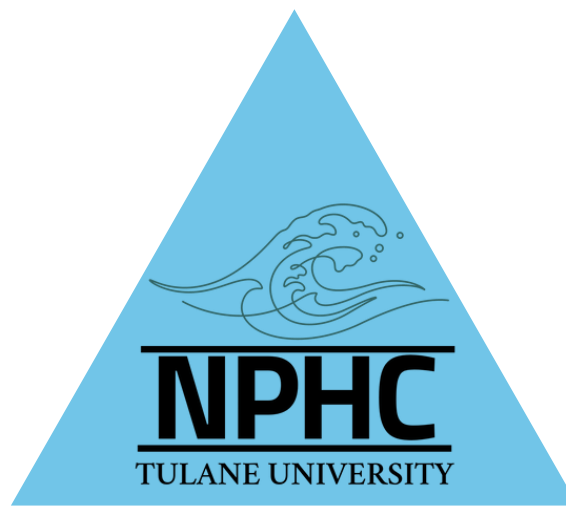




National Pan-Hellenic Council Membership Intake

- Membership intake is the process by which our National Pan-Hellenic Council (NPHC) chapters select, educate, and initiate new members. The organizations determine which semester intake will occur, and some organizations will not complete an intake process for both the fall and spring semesters of the same academic year. There is no council-coordinated intake period.
- Intake Process
 - Interest Meeting/Informational/Formal Rush
 - Interview/Selections
 - Educational Lessons
 - Induction/Initiation
 - New Member Presentation





National Pan-Hellenic Council Membership Intake

- NPHC Chapters do not have a formal recruitment registration to complete.
- Candidates should follow @tu_nphc and their chapter of interest to learn more about the chapter, upcoming programs, and its members.
 - Alpha Phi Alpha Fraternity, Inc. | @rhoiotaalphas
 - Alpha Kappa Alpha Sorority, Inc. | @omicronpsi08
 - Delta Sigma Theta Sorority, Inc. | @numu_dst
 - Zeta Phi Beta Sorority, Inc. | @iotaomicronzetas
- Chapters do consider program attendance in their eligibility requirements when selecting members.





Panhellenic Council

- The Panhellenic Council is the unifying, governing, and coordinating body of the [National Panhellenic Conference](#) groups at Tulane. It acts as a link between sororities, campus organizations, and administration, providing enrichment to all sorority members. The council plans events and discusses issues facing the Greek community.
- 9 Member Organizations:
 - Alpha Delta Pi, Alpha Epsilon Phi, Chi Omega, Delta Delta Delta, Kappa Alpha Theta, Kappa Kappa Gamma, Phi Mu, Pi Beta Phi, and Sigma Delta Tau.





Panhellenic Council Primary Recruitment & COB

- Primary Recruitment is a 4 round mutual selection process that takes place in the spring semester.
 - Monday, January 8th | PNM Move-In & Recruitment Kickoff
 - Tuesday, January 9th | Open House Day 1
 - Wednesday, January 10th | Open House Day 2
 - Thursday, January 11th | Philanthropy Round
 - Friday, January 12th | Sisterhood Round
 - Saturday, January 13th | Preference Round
 - Sunday, January 14th | Bid Day
- Continuous Open Bidding (COB) is an informal recruitment process that Panhellenic sororities use to recruit new members outside of Primary Recruitment to reach quota and/or total.





Panhellenic Council Primary Recruitment & COB

YOUR STUDENT WILL NEED TO
REGISTER USING THIS LINK.





Eligibility Requirements

- be a full-time, degree-seeking Tulane student
- have earned 12 hours with a minimum 2.5 cumulative GPA in those hours.
 - For students whose first semester of enrollment at Tulane will be Spring 2024, at least 6 of those 12 hours must be from graded, college-level courses accepted for credit by Newcomb-Tulane College.
- be in good standing with Tulane University.
 - For the purposes of recruitment and intake, good standing is defined as not having received a Student Conduct sanction of Disciplinary Probation or Deferred Suspension and not being placed on Honor Board Probation for academic misconduct.
- not found responsible for a drug possession violation.
- successfully complete all (6) components of our Potential New Member Education series.
 - Alcohol Education: My Choices, Our Legacy
 - Equity, Diversity & Inclusion: EverFi Training
 - Hazing Prevention: Tulane Hazing Prevention Module
 - Sexual Violence Prevention: Sexual Literacy
 - QPR: Question, Persuade, and Refer
 - Small Group Session w/ Greek Ambassadors
- There are NO EXCEPTIONS to these eligibility requirements.
- Students must register and complete these by Friday, December 8th

Unrecognized Groups

- Groups of students that are unrecognized and may exist as “underground”:
 - do not report to the university or any national fraternity
 - do not operate with any adult supervision or guidance
 - do not carry any insurance
 - are prohibited from affiliating with Tulane University but still recruit our students as members
 - are likely lying to your student about their status.
- Current List
 - 828
 - Delta Kappa Epsilon (Deke)
 - Omega Psi Phi (Omega or Ques)
 - Sigma Alpha Mu (Sammy)
 - Sigma Phi Epsilon (SigEp)

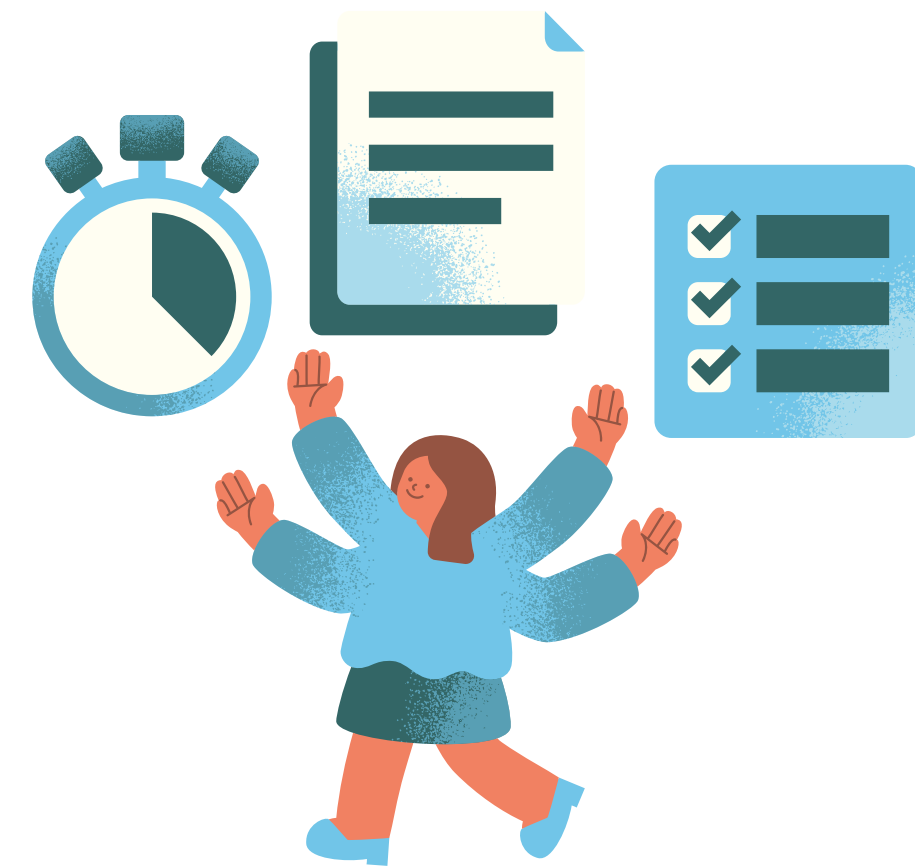
We strongly discourage students from joining a “fraternity” that the University does not recognize.



A decorative graphic consisting of a dark teal triangle on the left and a light blue triangle on the right, both pointing downwards.

Time Commitment/Balance

- Time commitment is flexible and dependent on what the student makes of it; 3-5 hours per week required for new members.
- Students' academic commitments come first and shouldn't be compromised
- Organizations view members' other campus involvement as a benefit to the entire group
- All groups encourage (some require) membership in other campus organizations
- New Member Program submissions



Costs of Membership

ALL DUES COVER PROGRAMS, COMMUNITY SERVICE EVENTS, INSURANCE FEES, AND NATIONAL BENEFITS. SOME ALSO WEEKLY MEALS, SOCIAL EVENTS, TRANSPORTATION TO EVENTS, T-SHIRTS, A CHAPTER HOUSE, AND MORE.



\$600-\$1500 PER SEMESTER
PLUS \$25/\$45 GREEK FEE



\$300-\$500 PER YEAR
\$750 - \$2,000 ONE-TIME FEE IN THE FIRST SEMESTER
PLUS \$15 GREEK FEE



\$650-\$800 PER SEMESTER
\$200-\$400 ONE-TIME FEES IN THE FIRST SEMESTER
PLUS \$20 GREEK FEE



Types of Hazing



- **SUBTLE HAZING**

- performing duties assigned to only new members
- Making new members earn the right to wear certain things
- Sleep deprivation

- **HARASSMENT HAZING**

- Any form of interrogation
- Personal servitude
- Lineups for the purpose of interrogating or intimidating
- Wearing of embarrassing or uncomfortable clothing
- Assigning pranks such as stealing, painting objects, or harassing other organizations

- **VIOLENT HAZING**

- Capturing or kidnapping
- Total or partial nudity at any time
- Pushing, shoving, tackling, punching, or any other physical contact
- Forced consumption of any liquid or food, including alcohol
- Paddling or whipping

Tulane's Hazing Code



DEFINITION FROM TULANE CODE OF STUDENT CONDUCT:

Hazing includes, but is not limited to, acts of servitude and/or behavior that humiliates, degrades, embarrasses, harasses or ridicules an individual, or otherwise is harmful or potentially harmful to an individual's physical, emotional, or psychological well-being, as an actual or apparent condition for initial or continued affiliation with any group. A student or organization violates this standard regardless of either the lack of intent to cause harm or the hazed individual's own willingness to participate. Unless affirmative steps were taken by the responding student or organization to prevent the hazing behavior, conduct charges may be brought against the group, officers of the group, and members of the group who are deemed to have encouraged, witnessed or knew about the behavior, in addition to any conduct action against persons who engaged in the hazing behavior itself.

A decorative graphic consisting of a dark teal triangle pointing up and a light blue triangle pointing down, partially overlapping.

Louisiana Hazing Laws



ACT 635: CREATED THE CRIME OF CRIMINAL HAZING, PROVIDES RELATED DEFINITIONS, CRIMINAL PENALTIES, AND REQUIRED INSTITUTIONAL ACTIONS.

ACT 640: DEFINES AND PROHIBITS HAZING, REQUIRES ADOPTION OF POLICY BY INSTITUTIONS, AND REQUIRES INSTITUTIONS TO PROVIDE INFORMATION ABOUT HAZING TO STUDENTS.

ACT 637: ASSIGNS CRIMINAL PENALTIES FOR FAILING TO REPORT OR SEEK ASSISTANCE REGARDING HAZING OR RECKLESS BEHAVIOR.



Hazing Prevention Resources



1

[HTTPS://WWW.GREEK.TULANE.EDU/
HAZING](https://www.greek.tulane.edu/HAZING)



2

[HTTPS://WWW.HAZINGPREVENTION
.ORG](https://www.hazingprevention.org)



3

TULANE'S HAZING HOTLINE
504-420-3111



4

[HTTPS://WWW.TULANE.EDU/
CONCERNS](https://www.tulane.edu/CONCERNS)



5

NATIONAL HAZING HOTLINE
1-800-NOT-HAZE

Additional information relevant to questions posed in the Q & A portion of the live webinar on November 15, 2023:

First, some helpful terms & definitions!

- **What is a PNM?** Students interested in joining fraternities/sororities are known as potential new members "PNMs".
- **What is a letter of rec?** Letters of recommendation (letters of rec) serve as extra credit/bonus points in Tulane's Panhellenic sorority recruitment process. Not all of our chapters require letters of recommendation and there are many women in Panhellenic sororities at Tulane who participated in recruitment and did not have letters of recommendation. If your student chooses to obtain letters of recommendation, they will only need to acquire them for the 9 Panhellenic sororities we have at Tulane. Letters of recommendation are optional and due by the start of recruitment (Monday, January 8th) through each sorority's national website.
- **What is Panhellenic Quota?** Quota for Panhellenic is the estimated number of potential new members who will join a Panhellenic Sorority during Formal Recruitment. Quota was 73 during the Spring 2023 Formal Recruitment period.
- **What is an unrecognized/off-campus group and who are they?** Tulane University currently has 25 recognized fraternities/sororities on-campus. Unrecognized/off-campus groups are organizations that are currently not protected or recognized by the university. These include: Sigma Alpha Mu (SAMMY), Sigma Phi Epsilon (Sig Ep), 828 (Not affiliated with the Alpha Epsilon Pi chapter), Delta Kappa Epsilon (DKE), Pi Kappa Alpha (Pike), & Omega Psi Phi Fraternity Incorporated (Omegas/Ques). If your student is involved or associated with any of these organizations, please reach out to our office so we can better manage a safe and enjoyable fraternity experience for them here at Tulane.
- **What is a pledge/new member class?** This is the group of students that your student joins a fraternity/sorority with! Based off of previous years of potential new members interested in joining fraternities and sororities at Tulane increasing, anticipated pledge class sizes are expected to continue rising but a more exact estimate can't be produced until registration for IFC & Panhellenic Recruitment closes.
- **What is IFC/Panhel/NPHC? What is a council?** Each fraternity and sorority at Tulane values the same ideals, however their organization's history are different in how they have shown those values. We currently have 3 councils at Tulane that govern our fraternities and sororities. The Interfraternity Council (IFC) participates in Formal Recruitment in the Spring and hosts a Free Agency period in both the Fall & Spring semesters. Every IFC fraternity participates in Formal Recruitment but not every IFC fraternity participates in Free Agency. The National Pan-Hellenic Council (NPHC) is known as our "Divine 9" fraternities and sororities. These organizations are historically, but not exclusively, Black Greek Lettered Organizations. NPHC Chapters participate in a recruitment process known as Intake that can occur during the Fall & Spring semesters. The Panhellenic Council (Panhel) governs 9 sororities and participates in both Formal Recruitment in the Spring & Continuous Open Bidding (COB) during the Fall & Spring semesters. Every Panhellenic sorority participates in Formal Recruitment but not every chapter participates in COB.

Early Move-In

- Unfortunately, potential new members are not able to move in until January 8th. Many families choose to reserve a hotel room and arrive in New Orleans on Sunday, January 7th so that they can ensure their student attends the first Recruitment event on Monday, January 8th.
- The cost to having students on campus early for recruitment is split between the Greek Fee that is charged to each active fraternity and sorority member and the cost associated with registering for recruitment. Potential new members are expected to pay a fee when they register for recruitment. Members of the fraternity & sorority community at Tulane are charged a fee for joining this community in addition to the dues they pay to their chapter. Both of these fees cover the cost of early move-in for potential new members.

Dining & Housing

- Some of our sororities offer meal plans but not all of them do. Potential new members are encouraged to ask questions like this one during recruitment when they have the chance to learn more about each fraternity and sorority experience!
- Dining halls will be open for students who move in early to attend recruitment.
- Not all fraternities and sororities have chapter houses at Tulane. Each chapter house has a different live-in occupancy level with some facilities offering space for 2 people to live and other facilities offering space for 10+ people to live. Sigma Chi, Sigma Alpha Epsilon, Zeta Beta Tau, and Phi Gamma Delta are the current fraternities that offer a meal plan for their members. None of the sororities here at Tulane have meal plans but many of our chapters will offer dining/catering options during chapter-wide events. Each fraternity house have a different number of vacancies that members are allowed to rent for housing after they have fulfilled the Tulane required live-on. Members will sign a lease similar to any other residential agreement. Members aren't required to live in the facility.

Costs of Membership & Dues

- Social activities and events are covered in membership dues. Chapters are not allowed to use chapter funds to purchase or distribute alcohol. Chapters are allowed and encouraged to use chapter funds to acquire socially responsible venues and security measures that protect students when attending social events.
- The three categories for costs of membership apply to each of our 3 councils, 2 of which have sororities and 2 of which have fraternities. The Interfraternity Council (IFC) has fraternities and a specific estimated cost associated with their experience. The Panhellenic Council has sororities and a specific estimated cost associated with their experience. The National Pan-Hellenic Council (NPHC/Divine 9) has fraternities and sororities and a specific estimated cost associated with their experience.

Recruitment Dates

- ***Panhellenic:***
 - Panhellenic Sorority Recruitment starts on Monday, January 8th! The earliest day for potential new members to move in on campus is Monday, January 8th. The first Panhellenic sorority recruitment event starts at 6pm in McAlister Auditorium.
 - Monday, January 8th – Panhellenic Sorority Recruitment Kickoff & Move-In Day for Potential New Members
 - Tuesday, January 9th & Wednesday, January 10th – Open House Round Day 1 & 2 where potential new members have the opportunity to meet with members from all 9 of our Panhellenic sororities!
 - Thursday, January 11th – Philanthropy Round where potential new members will be invited back to certain chapters to learn more about their values for philanthropy and community service.
 - Friday, January 12th – Sisterhood Round where potential new members will be invited back to certain chapters to understand more about what sisterhood and the experience of joining that chapter looks like.
 - Saturday, January 13th – Preference Round where potential new members will be invited back to certain chapters and have a final opportunity to engage in conversations about which chapter their personalities and values align with the most.
 - Sunday, January 14th – Bid Day! Potential new members become new members and can be welcomed into 1 of our 9 Panhellenic sororities!
- ***Interfraternity Council (IFC)***
 - Most IFC Recruitment events occur during the evening hours to avoid academic interruptions. All students are expected to prioritize their academics and communicate their class schedules with IFC to avoid being penalized for missing a recruitment event due to attending a class.
 - IFC Recruitment begins on Sunday, January 21st and continues throughout the week with Bid Day on Saturday, January 27th.

Spring Scholars & Transfers

- The December 8th deadline is for registration and submission of the certificates through the Canvas Course. We don't check grades until later in December to allow time for edits to grades that may have been put in incorrectly. As long as we have your transfer before January 8th, you're good to go.
- Students who are taking courses here at Tulane this semester won't have their grades on December 8th. The December 8th deadline is for registration and submission of the certificates through the Canvas Course. We don't check grades until later in December to allow time for edits to grades that may have been put in incorrectly.

Hazing

- Any report that comes in indicating that hazing is occurring is immediately sent to TUPD. Due to Louisiana Law any report of hazing has to be investigated by police. Once TUPD investigates, if there is findings that hazing has occurred the organization and individuals are sent through the conduct process. The organization will likely be suspended from Tulane and the individuals are likely to receive criminal charges.

Missing Recruitment Events

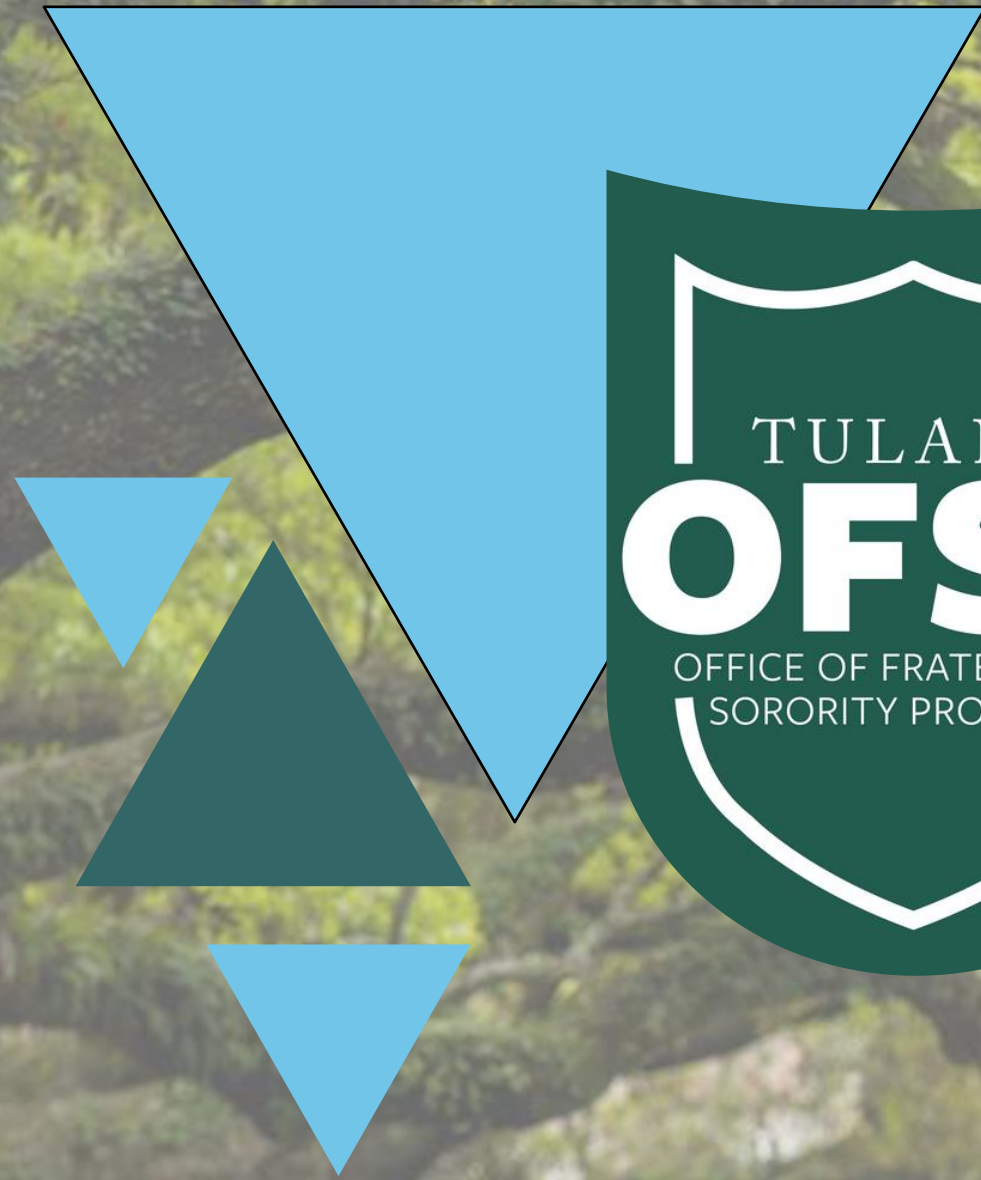
- If a potential new member's flight is cancelled or delayed and they miss a Recruitment event, they should contact the Office of Fraternity & Sorority Programs staff at 504.247.1542 or greek@tulane.edu with documentation of their flight change so we can adjust their recruitment schedule and ensure they are not penalized for failing to attend a Recruitment event.
- Potential new members are expected to attend all recruitment events during Formal Recruitment in the Spring once they are registered in order for them to be eligible to receive a bid on Bid Day. If your student has a serious concern about attending a chapter's scheduled recruitment event, please ask them to reach out to either the Panhellenic/Interfraternity Council or our staff. We encourage all students to keep an open mind as they go through the recruitment process because they are not just joining a chapter, they are joining one of 25 chapters, one of 3 councils, and one fraternity/sorority community.

Panhellenic Recruitment Information

- Panhellenic sororities receive information about potential new members when registration closes and all grades/conduct backgrounds have been verified so that sororities are only gaining access to students' registration forms after they have been deemed eligible to participate in recruitment. This information will be shared in mid-December allowing sororities the opportunity to learn more about potential new members as they prepare to meet them during recruitment.
- Tulane Panhellenic will provide a more in-depth recruitment guide with details about suggested outfits for each day closer to Recruitment starting. Recommended attire for Kickoff is casual and comfortable! Open House & Philanthropy rounds focus more on getting to know the potential new members so we encourage them to wear dressy-casual. Sisterhood is more of a formal round so we recommend brunch attire. Preference is the most special and dressy round so we recommend dressing more formal! Bid Day is fun and exciting, we recommend wearing sneakers/tennis shoes and comfortable bottoms as they will receive a t-shirt from the sorority they run home to.
- A significant portion of Panhellenic sorority women do join their organization as sophomores and juniors. It is more common for upperclassmen to join a Panhellenic sorority during COB rather than Formal Recruitment but it is totally up to the student regarding which type of recruitment process they would rather experience.
- Last year, 691 potential new members participated in Panhellenic Sorority Recruitment from start to finish (Kickoff-Bid Day) and the average new member class size was 73.
- 97% of potential new members received a bid to a sorority they were interested in joining during Formal Recruitment.

Interfraternity Council (IFC) Recruitment Information

- Recruitment in the Interfraternity Council (IFC) does not involve a ranking process. As potential new members go through the recruitment process, they meet with different chapters and get to know members of those chapters to determine where they may fit best. The final day of IFC Recruitment is known as Bid Day. On IFC Bid Day, potential new members have the opportunity to receive bid(s) of membership from however many organizations they connected with throughout the recruitment process. Potential new members then become new members as they choose which fraternity they connected with the most and accept their bid of membership.
- While Formal Recruitment happens in the Spring, Interfraternity Council (IFC) chapters do host community-wide events throughout the Fall semester as a way for potential new members to learn more about the experience. IFC will host events like Quad Days, Open Houses, etc to promote the fraternity experience. Additionally to these events, IFC chapters will also host events like barbecues, dinners, pick up basketball, etc to begin building relationships with potential new members. Potential new members looking to join the fraternity and sorority experience at Tulane are encouraged (but not required) to go to a few of these events throughout the Fall semester.



Thank You!



TULANE UNIVERSITY
FRATERNITY & SORORITY PROGRAMS

📞 504-247-1542

✉️ GREEK@TULANE.EDU

🌐 GREEK.TULANE.EDU

📷 @GREEK.TULANE

📍 LAVIN-BERNICK CENTER,
SUITE G04